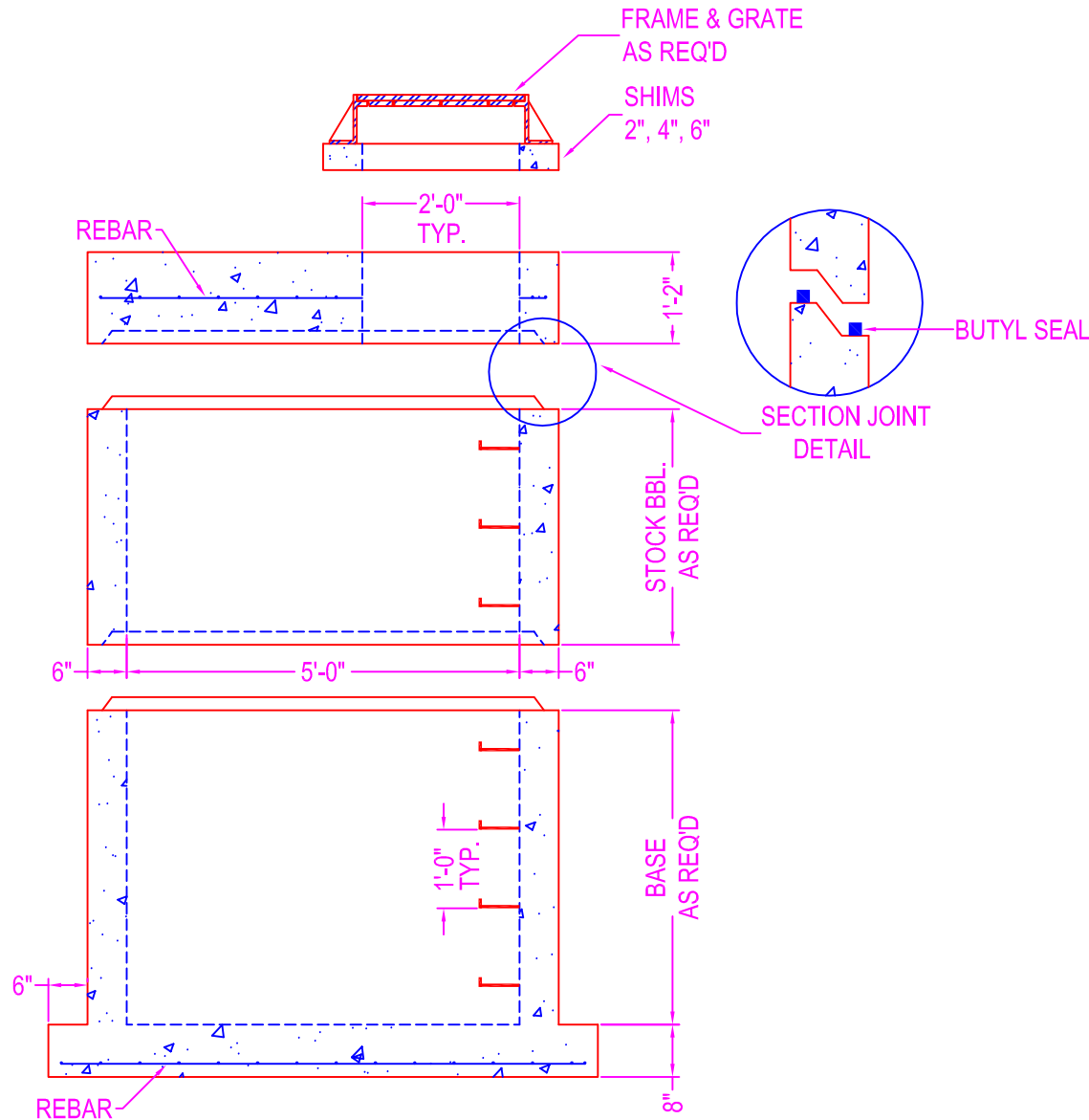


# MANHOLE 5'-0" DIA.



## NOTES:

CONCRETE: 5000 psi @ 28 days  
 DESIGN SPECS: conform to latest ASTM C-478  
 REF.: area of circ. steel .17 sq. in. / lin. ft.  
 STEPS: steel reinforced copolymer polypropylene plastic step conforms to latest ASTM C-478

DESIGN LOAD: HS-20

OPENINGS: size & location to conform to dwgs.

### TYPES:

- Coreout - pipe o.d. plus 4"
- Kor-N-Seal - details on spec. sheet
- Star Seal - details on spec. sheet

COATING: if req'd

### TYPES:

- CS-55
- Epoxy
- In
- Out
- None

BUTYL SEALANT: @ each joint; see spec. sheet

## STOCK BARREL HEIGHTS

1'-0"	2'-0"	4'-0"
1'-6"	3'-0"	

	750 Howard Street Elmira, NY 14904
	Fax: (607) 737-0291 Phone: (607) 733-0568 1-800-472-4335

Title: 5' Dia. Manhole

Scale: Not To Scale

Drawn By: JPS

Drawing No.: 05160502

Date: 5-16-05