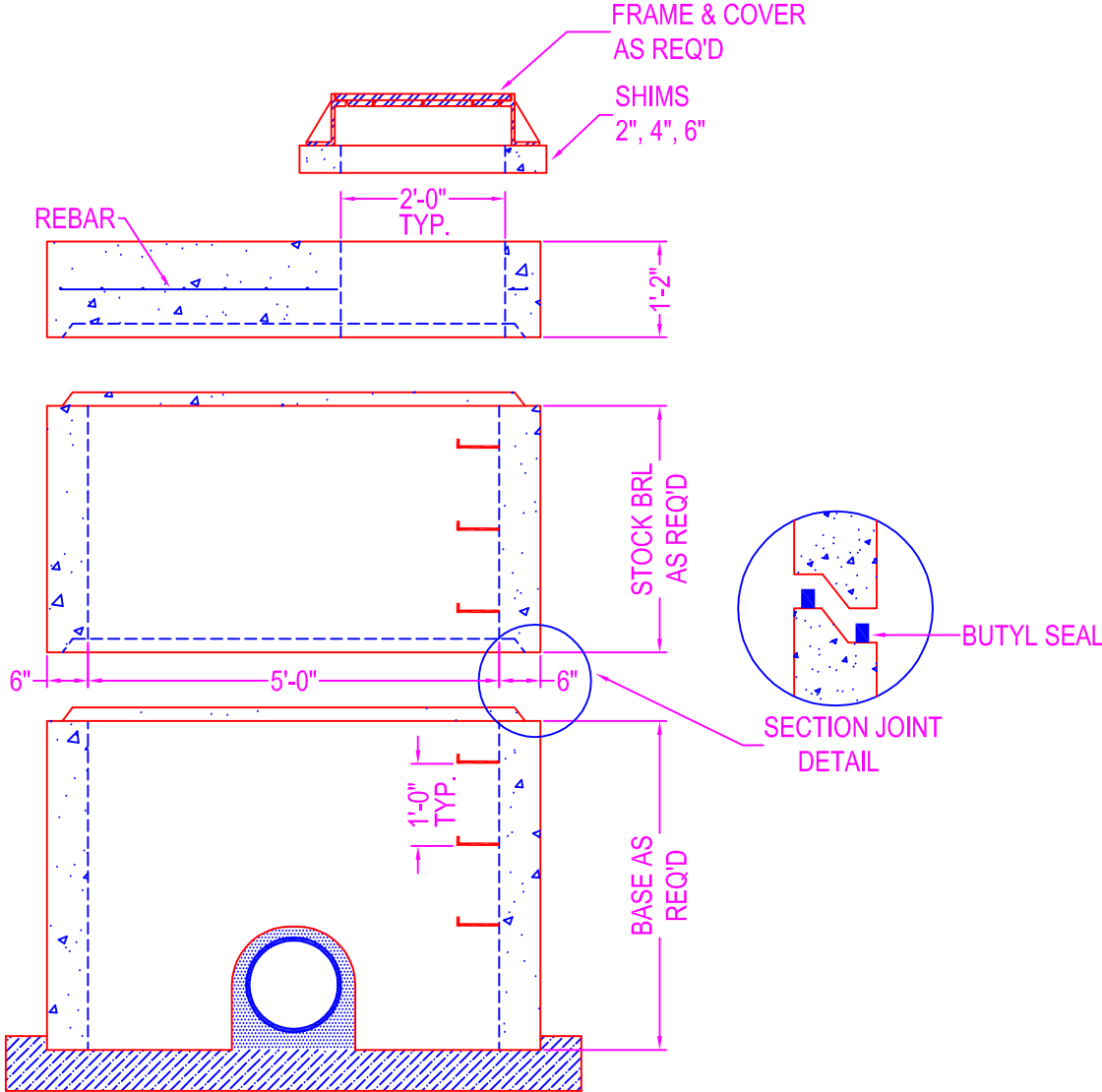


# DOGHOUSE MANHOLE 5'-0" DIA.



- NOTES:**
- CONCRETE: 5000 psi @ 28 days
  - DESIGN SPECS: conform to latest ASTM C-478
  - REF.: area of circ. steel .17 sq. in. / lin. ft.
  - STEPS: steel reinforced copolymer polypropylene plastic step conforms to latest ASTM C-478
  - DESIGN LOAD: HS-20
  - OPENINGS: size & location to conform to dwgs.
  - TYPES:
    - Coreout - pipe o.d. plus 4"
    - Kor-N-Seal - details on spec. sheet
    - Star Seal - details on spec. sheet
  - COATING: if req'd
    - CS-55
    - Epoxy
    - In
    - Out
    - None
  - BUTYL SEALANT: @ each joint; see spec. sheet

**STOCK BARREL HEIGHTS**

1'-0"	2'-0"	4'-0"
1'-6"	3'-0"	

- Indicates Contractor to Field Pour Base Slab
- Indicates Contractor to Field Pour Grout Around Pipe

	750 Howard Street Elmira, NY 14904 Fax: (607) 737-0291 Phone: (607) 733-0568 1-800-472-4335	<b>Title: 5' Dia. Doghouse MH</b>	Drawn By: JPS
	Scale: Not To Scale		Drawing No.: 04030601
			Date: 4-3-06