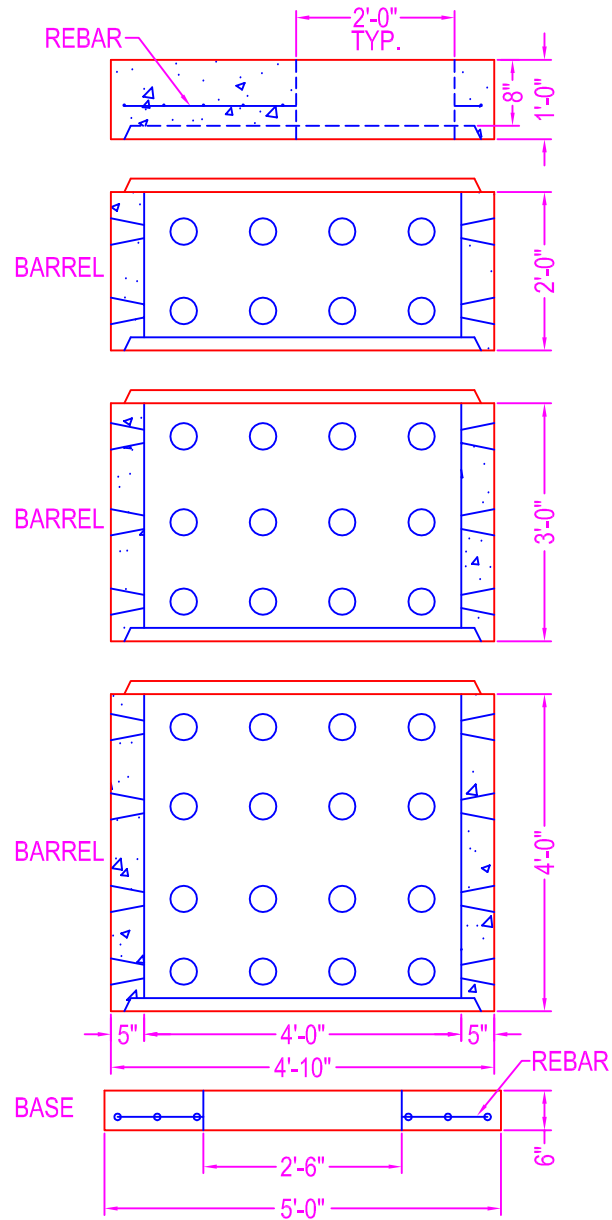
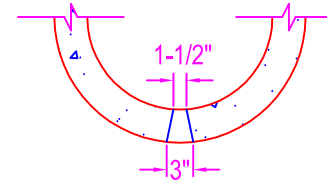


# DRYWELL 4'-0" DIA.




## NOTES:

- CONCRETE: 5000 psi @ 28 days
- POLYPROPYLENE FIBERS
- COVER: HS20 load rating
- BASE: #3 rebar @ 12" o.c.
- DRAIN HOLES: 12" o.c.



DRAIN HOLE  
DETAIL

 <p>Zeiser Wilbert VAULT, INC. CONCRETE PRODUCTS</p>	750 Howard Street Elmira, NY 14904 Fax: (607) 737-0291 Phone: (607) 733-0568 1-800-472-4335	<b>Title: 4' Dia. Drywell</b>	Drawn By: JPS
		Scale: Not To Scale	Drawing No.: 1036
			Date: 12-13-99