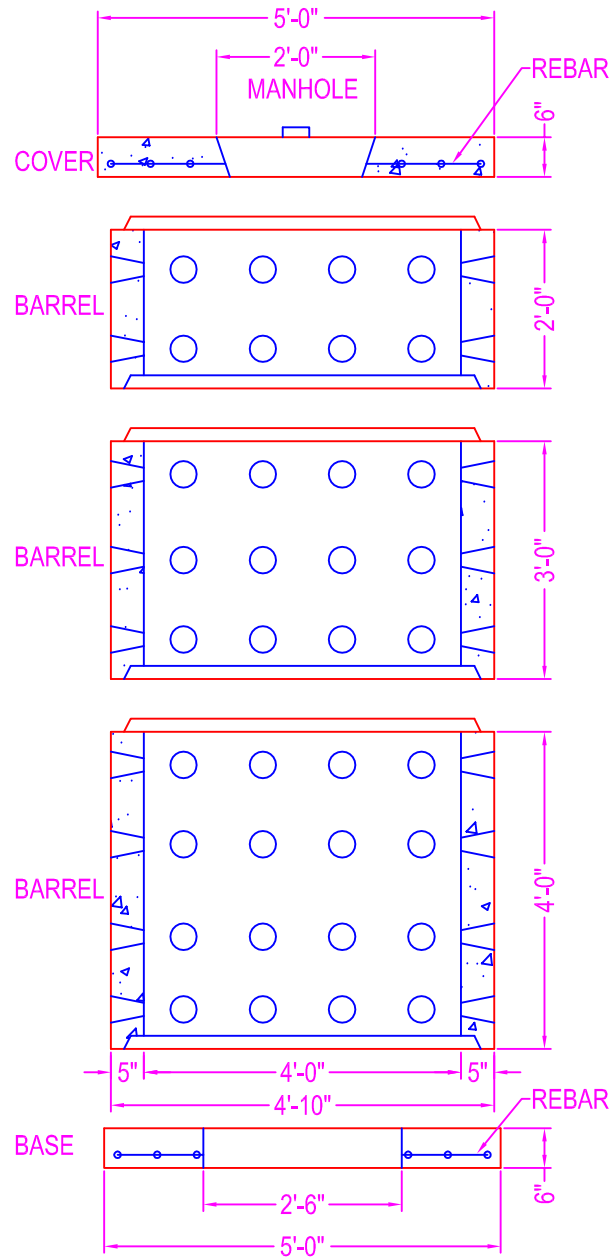
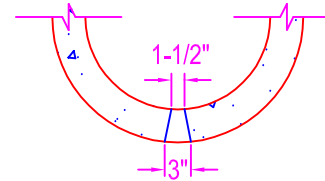


DRYWELL 4'-0" DIA.




NOTES:

- CONCRETE: 5000 psi @ 28 days
- POLYPROPYLENE FIBERS
- COVER: #3 rebar @ 12" o.c.
- BASE: #3 rebar @ 12" o.c.
- DRAIN HOLES: 12" o.c.



DRAIN HOLE
DETAIL

 <p>Zeiser Wilbert VAULT, INC. CONCRETE PRODUCTS</p>	<p>750 Howard Street Elmira, NY 14904 Fax: (607) 737-0291 Phone: (607) 733-0568 1-800-472-4335</p>	<p>Title: 4' Dia. Drywell</p>	<p>Drawn By: JPS</p>
		<p>Scale: Not To Scale</p>	<p>Drawing No.: 1036</p>
			<p>Date: 12-13-99</p>