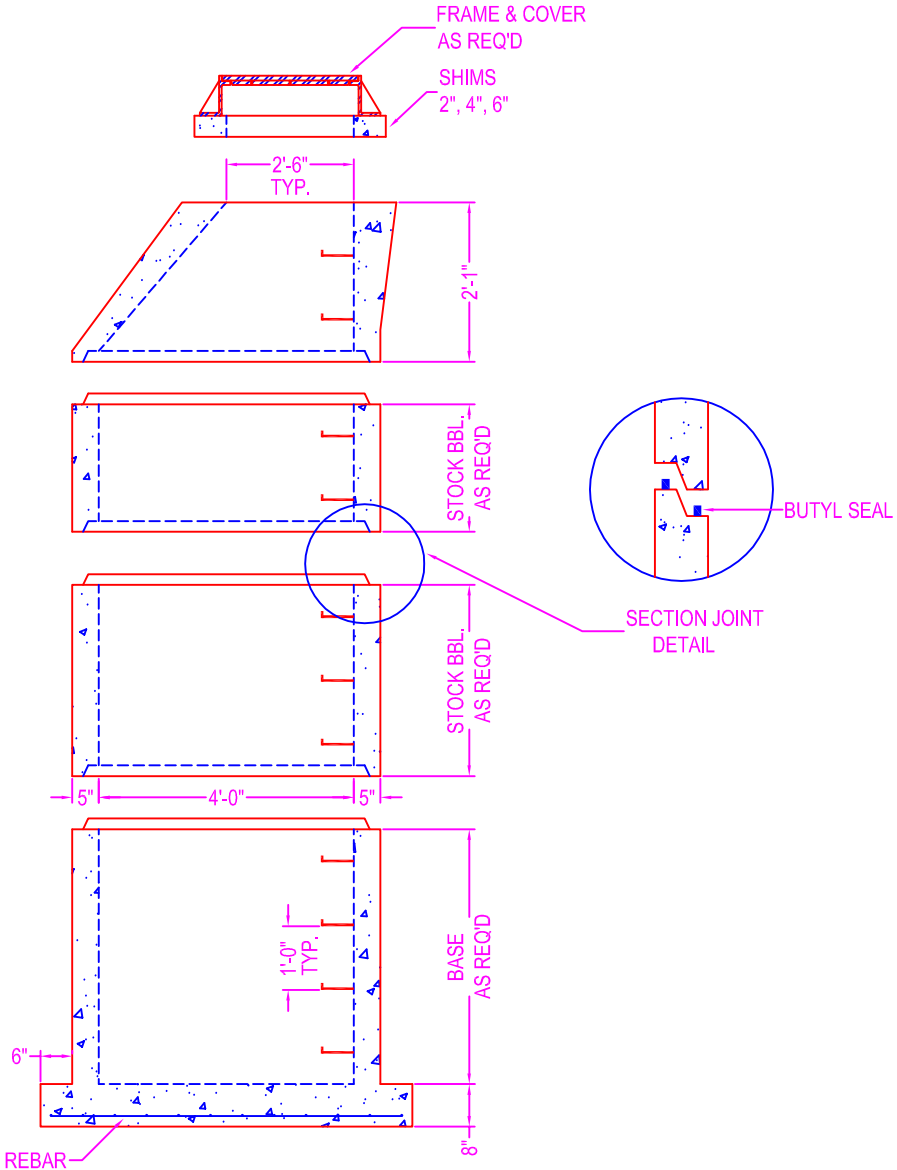


# MANHOLE w/ CONE 4'-0" DIA.



**NOTES:**

- CONCRETE: 5000 psi @ 28 days
- DESIGN SPECS: conform to latest ASTM C-478
- REF.: area of circ. steel .12 sq. in. / lin. ft.
- STEPS: steel reinforced copolymer polypropylene plastic step conforms to latest ASTM C-478
- DESIGN LOAD: HS-20
- OPENINGS: size & location to conform to dwgs.
- TYPES:
  - Coreout - pipe o.d. plus 4"
  - Kor-N-Seal - details on spec. sheet
  - Star Seal - details on spec. sheet
- COATING: if req'd
- TYPES:
  - CS-55
  - Epoxy
    - In
    - Out
    - None
- BUTYL SEALANT: @ each joint; see spec. sheet

STOCK BARREL HEIGHTS

1'-0"	2'-0"	4'-0"
1'-6"	3'-0"	

	750 Howard Street Elmira, NY 14904 Fax: (607) 737-0291 Phone: (607) 733-0568 1-800-472-4335	<b>Title: 4' Dia Manhole w/ Cone</b>	Drawn By: JPS
		Scale: Not To Scale	Drawing No.: 04270602
			Date: 4-27-06