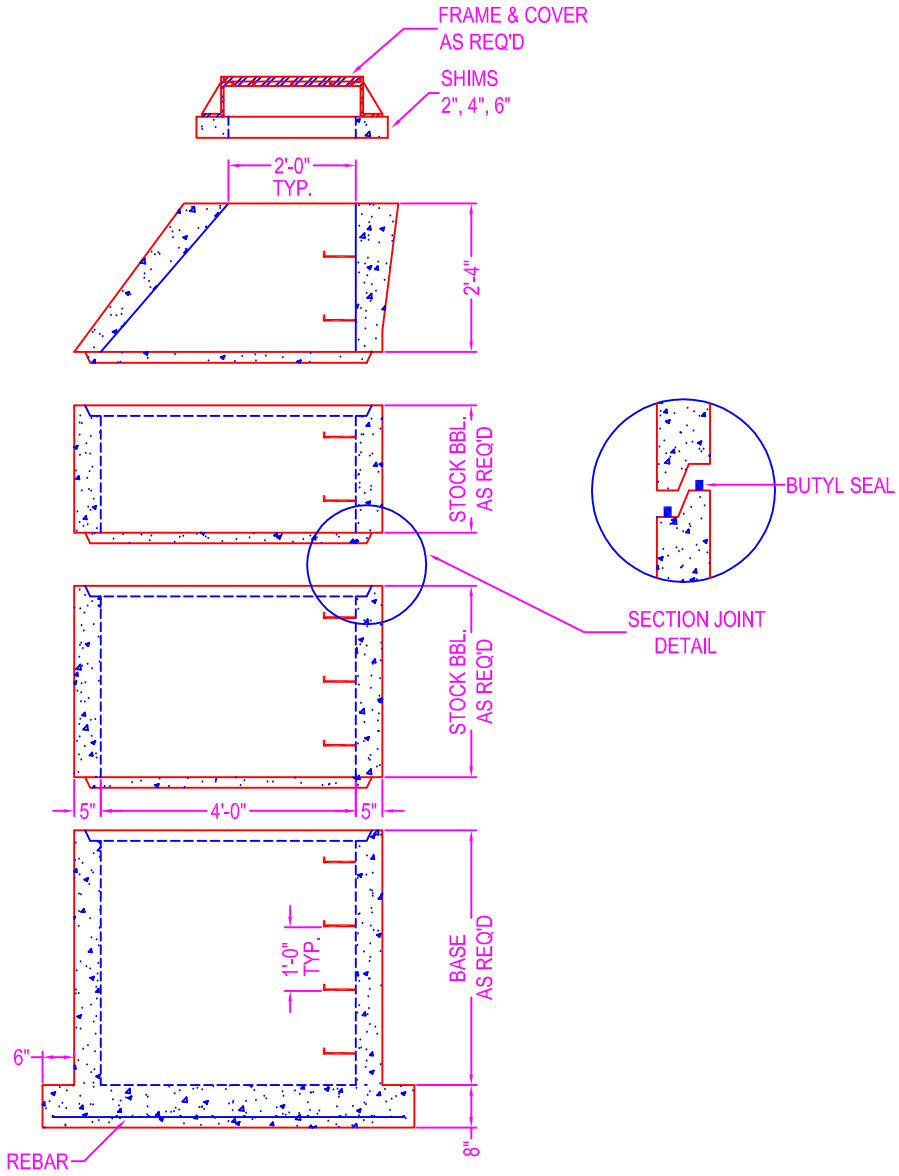



MANHOLE w/ CONE 4'-0" DIA.



- NOTES:
- CONCRETE: 5000 psi @ 28 days
 - DESIGN SPECS: conform to latest ASTM C-478
 - REF.: area of circ. steel .12 sq. in. / lin. ft.
 - STEPS: steel reinforced copolymer polypropylene plastic step conforms to latest ASTM C-478
 - DESIGN LOAD: HS-25
 - OPENINGS: size & location to conform to dwgs.
 - TYPES:
 - Coreout - pipe o.d. plus 4"
 - Kor-N-Seal - details on spec. sheet
 - Star Seal - details on spec. sheet
 - COATING: if req'd
 - TYPES:
 - CS-55
 - Epoxy
 - In
 - Out
 - None
 - BUTYL SEALANT: @ each joint; see spec. sheet

STOCK BARREL HEIGHTS

1'-0"	2'-0"	4'-0"
1'-6"	3'-0"	

	750 Howard Street Elmira, NY 14904 Fax: (607) 737-0291 Phone: (607) 733-0568 1-800-472-4335	Title: 4' Dia. Manhole w/ Cone	Drawn By: JPS
	Scale: Not To Scale		Drawing No.: 04270602
			Date: 4-27-06